



TOSHIBA STANDARD PASSENGER ELEVATORS

DESIGN SELECTION

3rd Edition

Safety Cautions

- Observance of relevant laws / regulations are required.
- Read the entire “Instruction Manual” carefully before use, for important information about safety, handling and operation.

TOSHIBA

Toshiba Elevator and Building Systems Corporation

72-34, Horikawa-cho, Saiwai-ku, Kawasaki
212-8585, Japan

Please enter the contents from the “Inquiry Input Form” in website.
<https://www.toshiba-elevator.co.jp/elv/infoeng/>

・ The data given in this catalog are subject to change without notice.
* Revised publication effective Sep. 2021

THE SOLUTIONS

TOSHIBA STANDARD PASSENGER ELEVATORS DESIGN SELECTION

COMPANY SOLUTIONS

Toshiba Elevator and Building Systems Corporation has built a framework which encompasses all aspects from system development to production, sales to marketing, installation, adjustment, maintenance and services in order to provide clients with the highest quality products and services.

Utilizing the comprehensive technological infrastructure developed by Toshiba Group in more than 140 years since its foundation, we aim to enhance the leading edge technology and quality that we used to develop the ultra high speed elevator, harnessing Toshiba’s technological innovations to their fullest extent. To meet clients’ expectations and requirements for safe and pleasant elevators as well as constantly pursuing further innovation and improvement. Furthermore, we are aiming to strengthen system development, production, enhancing sales channel and sales partnership to expand in the global market.

Appearances Worthy of the Building

When a person enters a building, the first room to step inside is the elevator. The elevator plays an important role as a face deciding the first impression of the building and provides an enjoyable time in traveling from one floor to another.

It is the Toshiba elevator which elegantly and vividly produces a personality by means of a variety of expressions in line with the atmosphere of any building.

Contents

The Solutions	
Company Solutions	P.1
Appearances Worthy of the Building	P.2
Expansion of variations in car ceiling design	
	P.4
Car Design	
Car Design	P.5
Extension Specifications for Ceiling Design	P.31
Installation of Emergency exit of car ceiling	P.33
Hall Design	
Hall Decoration Item Variation	P.36
Operation Systems	
	P.43
Color & Material Variations	
	P.63
Other Optional Items	
	P.67



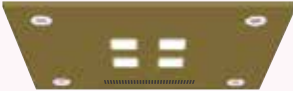
Expansion of variations in car ceiling design

Suitable for harmonization of a wide variety for building applications and concepts.
 Expanding the lineup of ceiling designs utilizing LED lighting
 All ceiling lighting uses LED lighting to take environmental measures such as long life and energy saving.

STANDARD



SL-P1 LED
 【Note2】



SL-1 LED

LED : LED light

【Note1】 Applies to models with a capacity of 1050kg or less.

【Note2】 Applies to models with a capacity of 1600kg or less.

OPTIONAL



DLX-31 LED



DLX-28 LED
 【Note1】



DLX-27 LED
 【Note1】



DLX-25 LED
 【Note1】



DLX-24 LED



DLX-23 LED



DLX-22 LED



DLX-21 LED



PRM-1 LED



PRM-2 LED
 【Note2】



TL-1 LED



TL-S2 LED
 【Note1】



TL-S1 LED
 【Note1】



DLC-1 LED
 【Note1】



SL-3 LED
 【Note1】



SL-V1 LED
 【Note1】

The actual product colors may vary slightly from those printed colors in this catalog.

Car Design

OPTIONAL

DLX-31

Front side view



Back side view



Ceiling design	DLX-31
Car side panel (Return panel)	Black color hairline finish stainless steel
Car side panel (Side panel)	Black color hairline finish stainless steel and Mirror etching finish stainless steel
Car side panel (Rear panel)	Black color hairline finish stainless steel and Mirror etching finish stainless steel
Kick plate	Nil
Car door	Mirror etching finish stainless steel
Car floor	Marble (JQ-1012)
COP	POP-G1L-84C
Indicator	8.4 inch LCD
Handrail	Nil

The actual product colors may vary slightly from those printed colors in this catalog.

OPTIONAL

DLX-31

Front side view



Back side view



Ceiling design	DLX-31
Car side panel (Return panel)	Vibration finish stainless steel
Car side panel (Side panel)	Vibration finish stainless steel
Car side panel (Rear panel)	Vibration finish stainless steel
Kick plate	Nil
Car door	Vibration finish stainless steel
Car floor	Vinyl tile (TSF-1C)
COP	POP-G1NS
Indicator	7.0 inch LCD segment
Handrail	Nil

The actual product colors may vary slightly from those printed colors in this catalog.

Car Design

OPTIONAL

DLX-31

Front side view



Back side view



Ceiling design	DLX-31 with patern D
Car side panel (Return panel)	Vibration finish stainless steel
Car side panel (Side panel)	Vibration finish stainless steel Adopted decorative sheet (Decorative film) by other works.
Car side panel (Rear panel)	Vibration finish stainless steel Adopted decorative sheet (Decorative film) by other works.
Kick plate	Nil
Car door	Vibration finish stainless steel
Car floor	Marble (JQ-1012)
COP	POP-G1NS
Indicator	7.0 inch LCD segment
Handrail	Nil

The actual product colors may vary slightly from those printed colors in this catalog.

OPTIONAL

DLX-28

Front side view



Front left side view



Ceiling design	DLX-28
Car side panel (Return panel)	Hairline finish stainless steel
Car side panel (Side panel)	Hairline finish stainless steel
Car side panel (Rear panel)	Hairline finish stainless steel
Kick plate	Nil
Car door	Hairline finish stainless steel
Car floor	Vinyl tile (MID809)
COP	COP-G1N
HCOP	HCOP-G1D
Indicator	LED Dot matrix (Orange color)

The actual product colors may vary slightly from those printed colors in this catalog.

Car Design

OPTIONAL

DLX-27

Front side view



Back side view



Ceiling design	DLX-27
Car side panel (Return panel)	Hairline finish stainless steel
Car side panel (Side panel)	Hairline finish stainless steel
Car side panel (Rear panel)	Hairline finish stainless steel
Kick plate	Nil
Car door	Hairline finish stainless steel
Car floor	Vinyl tile (MID809)
COP	COP-G1N
Indicator	LED Dot matrix (Orange color)
Handrail	Nil

The actual product colors may vary slightly from those printed colors in this catalog.

OPTIONAL

DLX-25

Front side view



Back side view



Ceiling design	DLX-25
Car side panel (Return panel)	Hairline finish stainless steel
Car side panel (Side panel)	Hairline finish stainless steel
Car side panel (Rear panel)	Hairline finish stainless steel
Kick plate	Nil
Car door	Hairline finish stainless steel
Car floor	Vinyl tile (MID809)
COP	COP-G1N-70S
Indicator	7.0 inch LCD segment
Handrail	Nil

The actual product colors may vary slightly from those printed colors in this catalog.

Car Design

OPTIONAL

DLX-24

Front side view



Back side view



Ceiling design	DLX-24
Car side panel (Return panel)	Bronze color mirror finish stainless steel
Car side panel (Side panel)	Bronze color hairline finish stainless steel and Bronze color mirror finish stainless steel
Car side panel (Rear panel)	Bronze color hairline finish stainless steel and Bronze color mirror finish stainless steel
Kick plate	Hairline finish stainless steel
Car door	Bronze color mirror finish stainless steel
Car floor	Marble tile (JRFL002)
COP	POP-G1L-104C
Sub-COP	POP-G1L-104C
Indicator	10.4 inch LCD
Remark	Applies to models with a capacity of 1150kg or more.

The actual product colors may vary slightly from those printed colors in this catalog.

OPTIONAL

DLX-24

Front side view



Back side view



Ceiling design	DLX-24 with pattern C
Car side panel (Return panel)	Vibration finish stainless steel
Car side panel (Side panel)	Rose gold color hairline finish stainless steel
Car side panel (Rear panel)	Rose gold color hairline finish stainless steel and Mirror finish stainless steel
Kick plate	Nil
Car door	Mirror finish stainless steel
Car floor	Vinyl tile (TSF-1C)
COP	COP-G1L-57B
Indicator	5.7inch LCD
Handrail	Stainless steel round type hand rail

The actual product colors may vary slightly from those printed colors in this catalog.

Car Design

OPTIONAL

DLX-23

Front side view



Back side view



Ceiling design	DLX-23
Car side panel (Return panel)	Mirror finish stainless steel
Car side panel (Side panel)	Sand blast finish stainless steel and Mirror finish stainless steel
Car side panel (Rear panel)	Sand blast finish stainless steel and Mirror finish stainless steel
Kick plate	Nil
Car door	Sand blast finish stainless steel
Car floor	Vinyl tile (TSF-1C)
COP	COP-G1L-57B
Indicator	5.7inch LCD
Handrail	Stainless steel round type hand rail

The actual product colors may vary slightly from those printed colors in this catalog.

OPTIONAL

DLX-23

Front side view



Back side view



Ceiling design	DLX-23
Car side panel (Return panel)	Vibration finish stainless steel
Car side panel (Side panel)	Vibration finish stainless steel
Car side panel (Rear panel)	Vibration finish stainless steel
Kick plate	Nil
Car door	Vibration finish stainless steel
Car floor	Vinyl tile (MID823)
COP	FCOP-G1L-57B
Indicator	5.7 inch LCD
Handrail	Stainless steel round type hand rail

The actual product colors may vary slightly from those printed colors in this catalog.

Car Design

OPTIONAL

DLX-22

Front side view



Back side view



Ceiling design	DLX-22
Car side panel (Return panel)	Vibration finish stainless steel
Car side panel (Side panel)	Vibration finish stainless steel and Mirror finish stainless steel
Car side panel (Rear panel)	Vibration finish stainless steel and Mirror finish stainless steel
Kick plate	Nil
Car door	Mirror finish stainless steel
Car floor	Marble (JQ-1013)
COP	POP-G1L-57B
Indicator	5.7 inch LCD
Handrail	Nil

The actual product colors may vary slightly from those printed colors in this catalog.

OPTIONAL

DLX-22

Front side view



Back side view



Ceiling design	DLX-22 with pattern A
Car side panel (Return panel)	Gold color hairline finish stainless steel
Car side panel (Side panel)	Gold color hairline finish stainless steel and Gold color mirror finish stainless steel
Car side panel (Rear panel)	Gold color hairline finish stainless steel and Gold color mirror finish stainless steel
Kick plate	Nil
Car door	Gold color mirror finish stainless steel
Car floor	Maarble (JQ-1012)
COP	POP-G1L-57B
Indicator	5.7 inch LCD
Handrail	Nil

The actual product colors may vary slightly from those printed colors in this catalog.

Car Design

OPTIONAL

DLX-21

Front side view



Ceiling design	DLX-21
Car side panel (Return panel)	Hairline finish stainless steel
Car side panel (Side panel)	Hairline finish stainless steel
Car side panel (Rear panel)	Hairline finish stainless steel
Kick plate	Hairline finish stainless steel
Car door	Hairline finish stainless steel
Car floor	Vinyl tile (MID806)
COP	FCOP-G1L-84C
Indicator	8.4 inch LCD
Handrail	Nil
Remark	Applies to models with a capacity of 1150kg or more.

The actual product colors may vary slightly from those printed colors in this catalog.

OPTIONAL

DLX-21

Front side view



Ceiling design	DLX-21 with pattern E
Car side panel (Return panel)	Vibration finish stainless steel
Car side panel (Side panel)	Vibration finish stainless steel Adopted decorative sheet (Decorative film) by other works.
Car side panel (Rear panel)	Vibration finish stainless steel Adopted decorative sheet (Decorative film) by other works.
Kick plate	Nil
Car door	Vibration finish stainless steel
Car floor	Marble (JQ-1012)
COP	POP-G1L-84C
Indicator	8.4 inch LCD
Handrail	Nil

The actual product colors may vary slightly from those printed colors in this catalog.

Car Design

OPTIONAL

PRM-1

Front side view



Ceiling design	PRM-1
Car side panel (Return panel)	Satin finish stainless steel
Car side panel (Side panel)	Satin finish stainless steel
Car side panel (Rear panel)	Satin finish stainless steel
Kick plate	Hairline finish stainless steel
Car door	Satin finish stainless steel
Car floor	Vinyl tile (MID-833)
COP	POP-G1L-84C
Indicator	8.4inch LCD
Handrail	Nil
Remark	Applies to models with a capacity of 1150kg or more.

The actual product colors may vary slightly from those printed colors in this catalog.

OPTIONAL

PRM-1

Front side view



Ceiling design	PRM-1
Car side panel (Return panel)	Vibration finish stainless steel
Car side panel (Side panel)	Black color hairline finish stainless steel and Vibration finish stainless steel
Car side panel (Rear panel)	Black color hairline finish stainless steel and Mirror finish stainless steel
Kick plate	Hairline finish stainless steel
Car door	Black color hairline finish stainless steel
Car floor	Marble tile (JQ-1013)
COP	POP-G1L-104C
Indicator	10.4inch LCD
Handrail	Stainless steel flat type hand rail
Remark	Applies to models with a capacity of 1150kg or more.

The actual product colors may vary slightly from those printed colors in this catalog.

Car Design

OPTIONAL

PRM-2

Front side view



Ceiling design	PRM-2
Car side panel (Return panel)	Black color hairline finish stainless steel
Car side panel (Side panel)	Black color hairline finish stainless steel and Mirror finish stainless steel
Car side panel (Rear panel)	Black color hairline finish stainless steel
Kick plate	Hairline finish stainless steel
Car door	Mirror etching finish stainless steel
Car floor	Vinyl tile (TSF-1C)
COP	POP-G1L
Indicator	LED Dot matrix (White color)
Handrail	Nil
Remark	Applies to models with a capacity of 1150kg or more.

The actual product colors may vary slightly from those printed colors in this catalog.

OPTIONAL

PRM-2

Front side view



Ceiling design	PRM-2
Car side panel (Return panel)	Vibration finish stainless steel
Car side panel (Side panel)	Gold color hairline finish stainless steel
Car side panel (Rear panel)	Gold color hairline finish stainless steel
Kick plate	Nil
Car door	Gold color hairline finish stainless steel
Car floor	Vinyl tile (TSF-1A)
COP	COP-G1L-57B
Indicator	5.7 inch LCD
Handrail	Nil

The actual product colors may vary slightly from those printed colors in this catalog.

Back side view



Car Design

OPTIONAL

DLC-1

Front side view



Back side view



Ceiling design	DLC-1
Car side panel (Return panel)	Hairline finish stainless steel
Car side panel (Side panel)	Hairline finish stainless steel
Car side panel (Rear panel)	Hairline finish stainless steel
Kick plate	Nil
Car door	Hairline finish stainless steel
Car floor	Vinyl tile (MID809)
COP	POP-G1NL
Indicator	7.0 inch LCD segment
Handrail	Nil

The actual product colors may vary slightly from those printed colors in this catalog.

OPTIONAL

TL-1

Front side view



Back side view



Ceiling design	TL-1
Car side panel (Return panel)	Sand blast finish stainless steel
Car side panel (Side panel)	Sand blast finish stainless steel
Car side panel (Rear panel)	Sand blast finish stainless steel and Mirror finish stainless steel
Kick plate	Nil
Car door	Hairline finish stainless steel
Car floor	Vinyl tile (MID-833)
COP	COP-G1L-57B
Indicator	5.7inch LCD
Handrail	Stainless steel round type hand rail

The actual product colors may vary slightly from those printed colors in this catalog.

Car Design

OPTIONAL

TL-S2

Front side view



Back side view



Ceiling design	TL-S2
Car side panel (Return panel)	Hairline finish stainless steel
Car side panel (Side panel)	Hairline finish stainless steel
Car side panel (Rear panel)	Hairline finish stainless steel
Kick plate	Nil
Car door	Hairline finish stainless steel
Car floor	Vinyl tile (TSF-1B)
COP	FCOP-G1NL
Indicator	7.0 inch LCD segment
Handrail	Nil

The actual product colors may vary slightly from those printed colors in this catalog.

OPTIONAL

TL-S1

Front side view



Back side view



Ceiling design	TL-S1
Car side panel (Return panel)	Hairline finish stainless steel
Car side panel (Side panel)	Hairline finish stainless steel
Car side panel (Rear panel)	Hairline finish stainless steel
Kick plate	Nil
Car door	Hairline finish stainless steel
Car floor	Vinyl tile (TSF-1B)
COP	FCOP-G1NL
Indicator	7.0 inch LCD segment
Handrail	Nil

The actual product colors may vary slightly from those printed colors in this catalog.

Car Design

STANDARD

SL-P1

Front side view



Back side view



Ceiling design	SL-P1
Car side panel (Return panel)	Hairline finish stainless steel
Car side panel (Side panel)	Hairline finish stainless steel
Car side panel (Rear panel)	Hairline finish stainless steel
Kick plate	Nil
Car door	Hairline finish stainless steel
Car floor	Vinyl tile (MID809)
COP	POP-G1NL
Indicator	7.0 inch LCD segment
Handrail	Nil

The actual product colors may vary slightly from those printed colors in this catalog.

OPTIONAL

SL-3

Front side view



Ceiling design	SL-3
Car side panel (Return panel)	Hairline finish stainless steel
Car side panel (Side panel)	Hairline finish stainless steel
Car side panel (Rear panel)	Hairline finish stainless steel
Kick plate	Nil
Car door	Hairline finish stainless steel
Car floor	Vinyl tile (MID809)
COP	COP-G1N
Indicator	LED Dot matrix (Orange color)
Handrail	Nil

The actual product colors may vary slightly from those printed colors in this catalog.

Car Design

STANDARD

SL-1

Front side view



Ceiling design	SL-1
Car side panel (Return panel)	Hairline finish stainless steel
Car side panel (Side panel)	Hairline finish stainless steel
Car side panel (Rear panel)	Hairline finish stainless steel
Kick plate	Hairline finish stainless steel
Car door	Hairline finish stainless steel
Car floor	Marble tile (MID-809)
COP	COP-G1L-57B
Indicator	5.7inch LCD
Handrail	Stainless steel round type hand rail
Remark	Applies to models with a capacity of 1150kg or more.

The actual product colors may vary slightly from those printed colors in this catalog.

OPTIONAL

SL-V1

Front side view



Ceiling design	SL-V1
Car side panel (Return panel)	Painted steel panel (62YS)
Car side panel (Side panel)	Painted steel panel (62YS)
Car side panel (Rear panel)	Painted steel panel (62YS)
Kick plate	Nil
Car door	Painted steel panel (62YS)
Car floor	Vinyl tile (MID809)
COP	COP-G1N
Indicator	LED Dot matrix (Orange color)
Handrail	Nil

The actual product colors may vary slightly from those printed colors in this catalog.

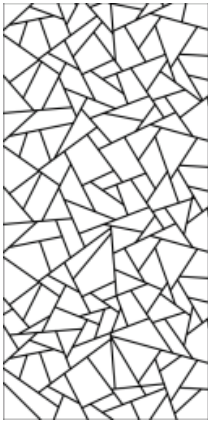
Car Design

Extension Specifications for Ceiling Design

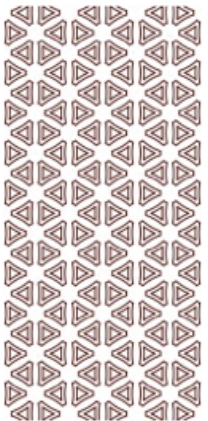
Variations can be expanded by adding 5 types (A to E) of patterns to 6 types of ceiling design. The combination of ceiling design and patterns can change the overall image of the internal cage design.

※Note: The pattern can be rearranged

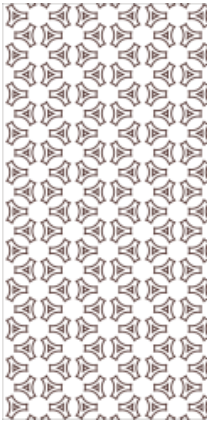
OPTIONAL
Pattern A
for DLX-22



OPTIONAL
Pattern B
for DLC-1



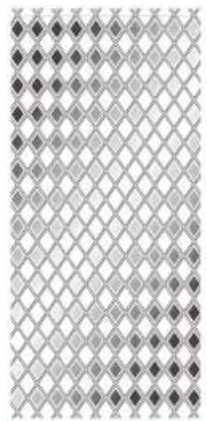
OPTIONAL
Pattern C
for DLX-24



OPTIONAL
Pattern D
for DLX-31



OPTIONAL
Pattern E
for DLX-21



The actual product colors may vary slightly from those printed colors in this catalog.

The actual product colors may vary slightly from those printed colors in this catalog.

Car Design

Installation of Emergency exit of car ceiling

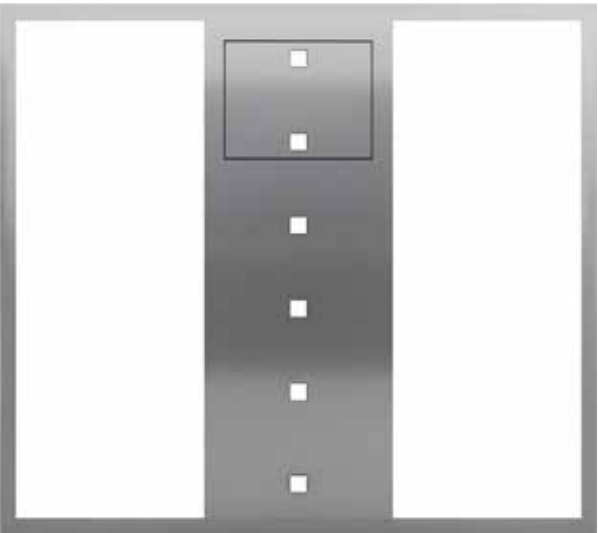
The gate of the rescue passenger from the elevator that has stopped in an emergency.
It can be opened after unlocking from the outside.
Please contact us for details as it will be a layout plan of the car ceiling design.

※Note: Car design TL-1, TL-S1, TL-S2, DLX-27, PRM-2 are not applicable of "Emergency exit"

Image sample of car design: DLX-24 (Cage size : w1600mm x d1400mm)



Emergency exit : w500mm, d400mm



The actual product colors may vary slightly from those printed colors in this catalog.

LED Lighting

Under equal brightness, LED lighting system only consumes 10% of electrical with comparison of an incandescent lamp and 50% of an fluorescent lamp. (part of ceiling)

Car design : PRM-1



SL-V1



Ventilation

* Adopted when not applying Kick-Plate



The actual product colors may vary slightly from those printed colors in this catalog.



Hall Design

Hall Decoration Item Variation

The combination of elevator hall equipment and specifications extends design. It can be easily harmonized with the entrance design of the building.



Hall design 2
OPTIONAL



Hall design 3
OPTIONAL



Hall design 4
OPTIONAL



Hall design 5
OPTIONAL



Hall design 6
STANDARD



Hall design 7
OPTIONAL

Hall design 1 OPTIONAL

Hall jamb	Wide type jamb with transom Hairline finish stainless steel
Hall door	Hairline finish stainless steel
Hall transam	Hairline finish stainless steel
Hall sill	Hardened aluminium
Hall indicator	Nil
Hall button	HB-G1K
Hall lantern	HL-G1-O



HB-G1K



HL-G1-O



Note : In the case of jamb with transom, fire-proof specification cannot be applied to the transom.

The actual product colors may vary slightly from those printed colors in this catalog.

Hall Design

Hall design 2 OPTIONAL

- Hall jamb** Wide type jamb
Painted steel panel (1NS)
- Hall door** Painted steel panel (1NS)
- Hall transam** Nil
- Hall sill** Hardened aluminium
- Hall indicator** HI-G34-O
- Hall button** HB-G1K
- Hall lantern** Nil



HI-G34-O



HB-G1K



The actual product colors may vary slightly from those printed colors in this catalog.

Hall design 3 OPTIONAL

- Hall jamb** Wide type jamb
Painted steel panel (66YS)
- Hall door** Painted steel panel (66YS)
- Hall transam** Nil
- Hall sill** Hardened aluminium
- Hall indicator** Nil
- Hall button** HIB-G1NL
- Hall lantern** HL-G1-O



HIB-G1NL



HL-G1-O



The actual product colors may vary slightly from those printed colors in this catalog.

Hall Design

Hall design 4 OPTIONAL

<i>Hall jamb</i>	Wide type jamb Hairline finish stainless steel
<i>Hall door</i>	Painted steel panel (62YS)
<i>Hall transam</i>	Nil
<i>Hall sill</i>	Hardened aluminium
<i>Hall indicator / Hall button</i>	HIB-G1L-43B
<i>Hall lantern</i>	Nil



Hall design 5 OPTIONAL

<i>Hall jamb</i>	Wide type jamb Painted steel panel (114PBS)
<i>Hall door</i>	Painted steel panel (114PBS)
<i>Hall transam</i>	Nil
<i>Hall sill</i>	Hardened aluminium
<i>Hall indicator</i>	HI-G1-O
<i>Hall button</i>	HB-G1K
<i>Hall lantern</i>	Nil



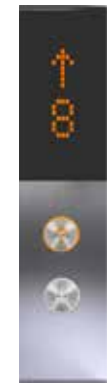
The actual product colors may vary slightly from those printed colors in this catalog.

The actual product colors may vary slightly from those printed colors in this catalog.

Hall Design

Hall design 6 STANDARD

<i>Hall jamb</i>	Narrow type jamb Painted steel panel (77GS)
<i>Hall door</i>	Painted steel panel (77GS)
<i>Hall transam</i>	Nil
<i>Hall sill</i>	Hardened aluminium
<i>Hall indicator / Hall button</i>	HIB-G1N
<i>Hall lantern</i>	Nil



HIB-G1N



The actual product colors may vary slightly from those printed colors in this catalog.

Hall design 7 OPTIONAL

<i>Hall jamb</i>	Wide type jamb Hairline finish stainless steel
<i>Hall door</i>	Hairline finish stainless steel
<i>Hall transam</i>	Nil
<i>Hall sill</i>	Hardened aluminium
<i>Hall indicator</i>	HI-G1L-57B
<i>Hall button</i>	HB-G1K
<i>Hall lantern</i>	Nil



HI-G1L-57B



HB-G1K



The actual product colors may vary slightly from those printed colors in this catalog.

OPERATION SYSTEMS



Operation Systems

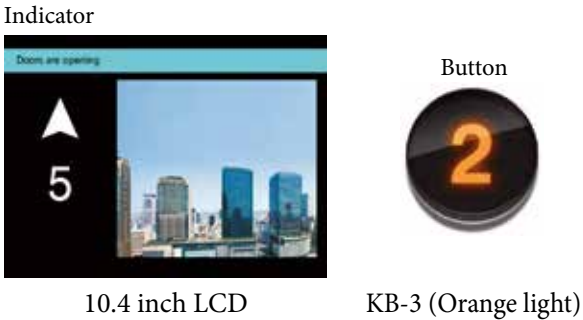
Car Operation Panel: POP type

※Note: Applicable to Wide Car type models

Car Operation Panel



POP-G1L-104C
OPTIONAL

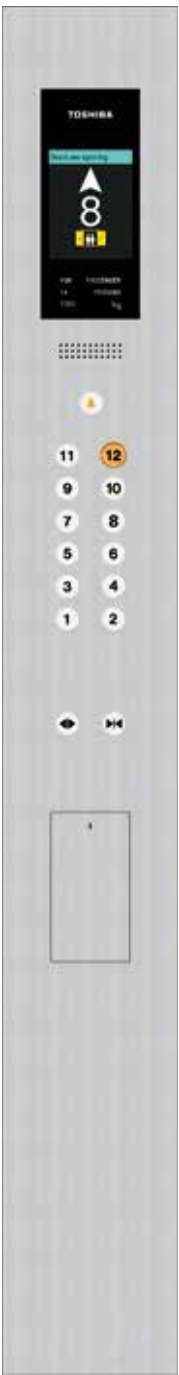


PRM-1

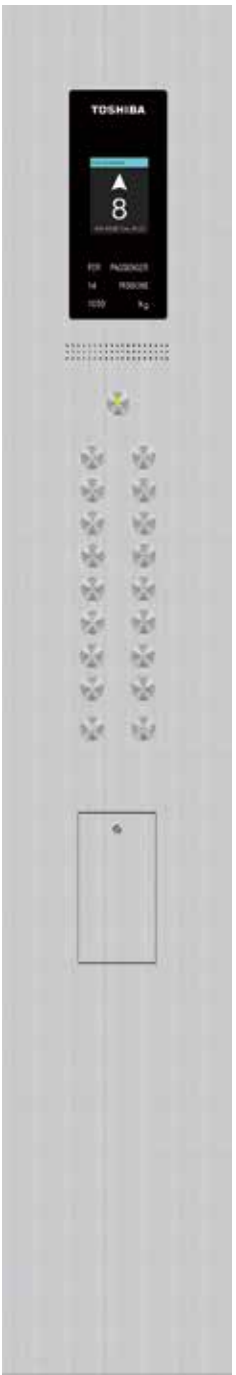


The actual product colors may vary slightly from those printed colors in this catalog.

Car Operation Panel



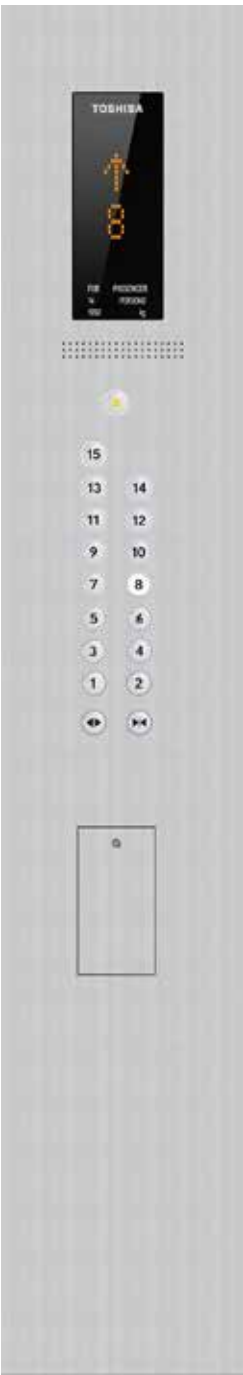
POP-G1L-84C
OPTIONAL



POP-G1L-57B
OPTIONAL



POP-G1L-70S
OPTIONAL



POP-G1L
OPTIONAL

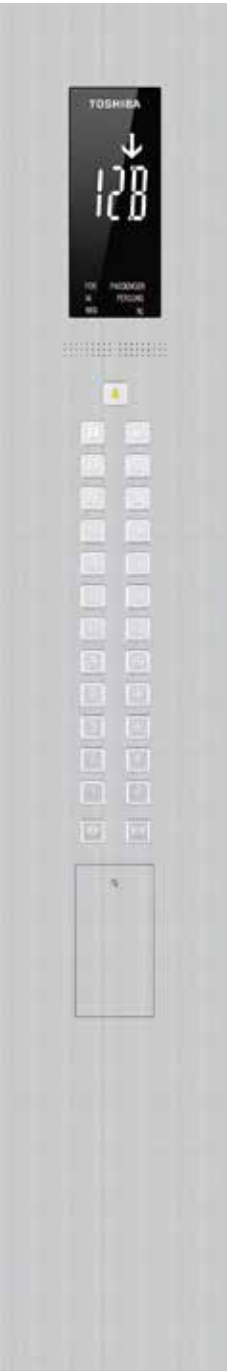
The actual product colors may vary slightly from those printed colors in this catalog.

Operation Systems

Car Operation Panel: POP type

※Note: Applicable to Wide Car type models


Car Operation Panel



DLX-31


POP-G1NS
OPTIONAL

Indicator




7 inch LCD Segment

Button



GS-3LB



The actual product colors may vary slightly from those printed colors in this catalog.

Car Operation Panel



SL-P1

POP-G1NL
STANDARD

Indicator



7 inch LCD Segment

Button



GS-5B-WT



The actual product colors may vary slightly from those printed colors in this catalog.

Operation Systems

Car Operation Panel: FCOP type

※Note: Applicable to Deep Car type models

Car Operation Panel



FCOP-G1L-84C
(8.4 inch LCD)
OPTIONAL



8.4 inch LCD



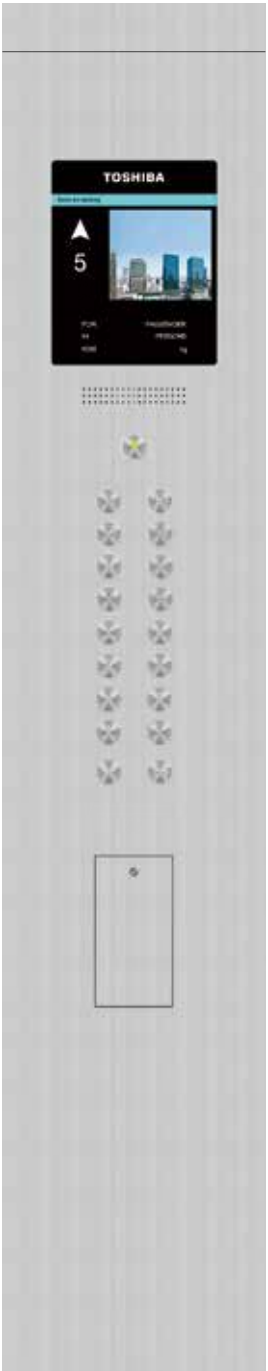
KB-7 (Orange light)

DLX-24

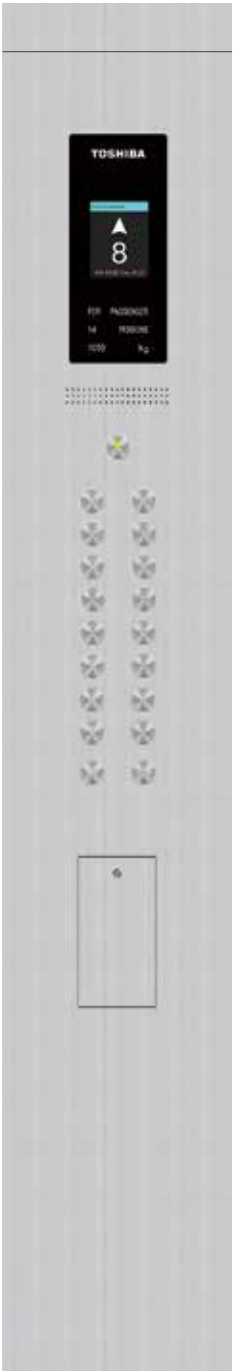


The actual product colors may vary slightly from those printed colors in this catalog.

Car Operation Panel



FCOP-G1L-104C
OPTIONAL



FCOP-G1L-57B
OPTIONAL



FCOP-G1L-70S
OPTIONAL



FCOP-G1L
OPTIONAL

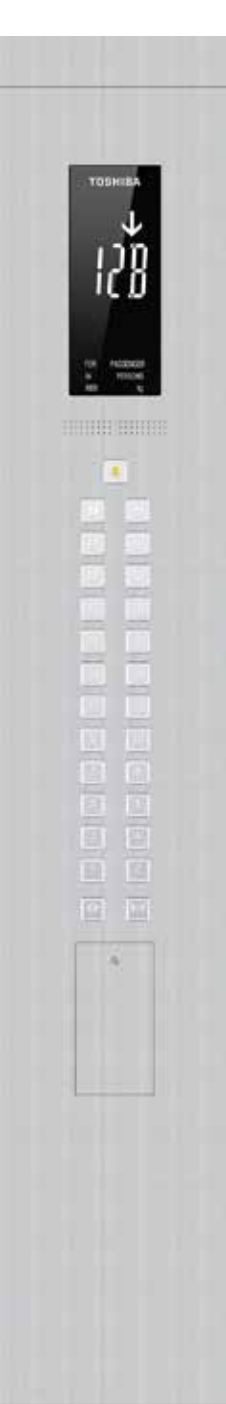
The actual product colors may vary slightly from those printed colors in this catalog.

Operation Systems

Car Operation Panel: FCOP type

※Note: Applicable to Deep Car type models

Car Operation Panel



FCOP-G1NS
OPTIONAL



7 inch LCD
Segment



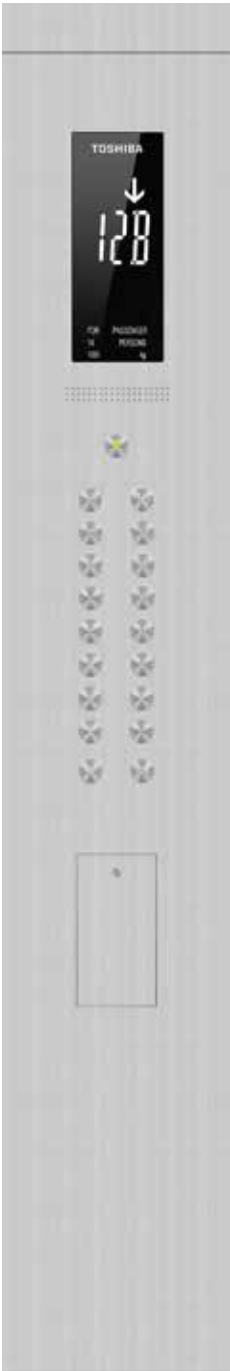
GS-3LB

TL-S2



The actual product colors may vary slightly from those printed colors in this catalog.

Car Operation Panel



FCOP-G1NL
STANDARD



7 inch LCD
Segment



GS-5B-WT

DLX-23



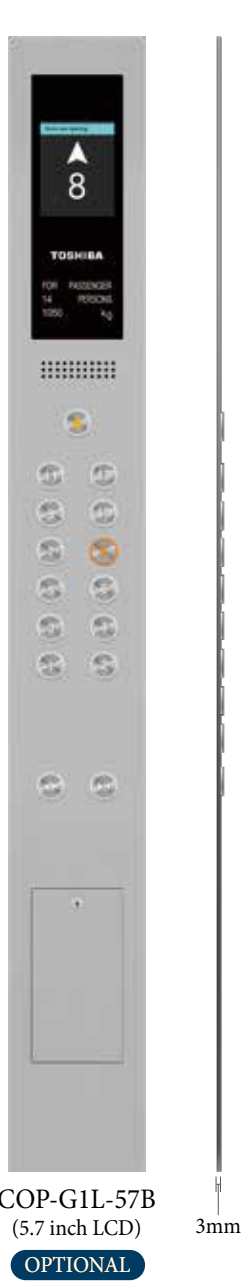
The actual product colors may vary slightly from those printed colors in this catalog.

Operation Systems

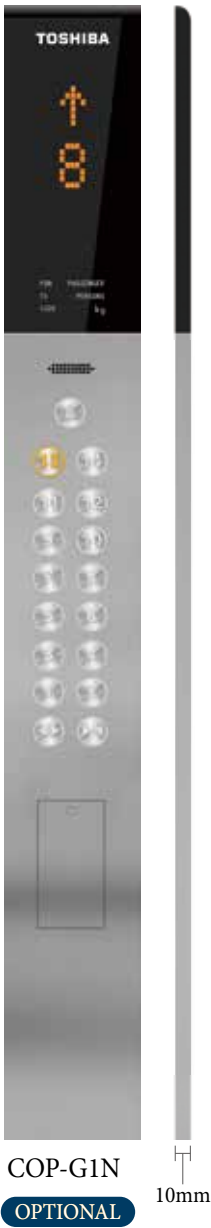
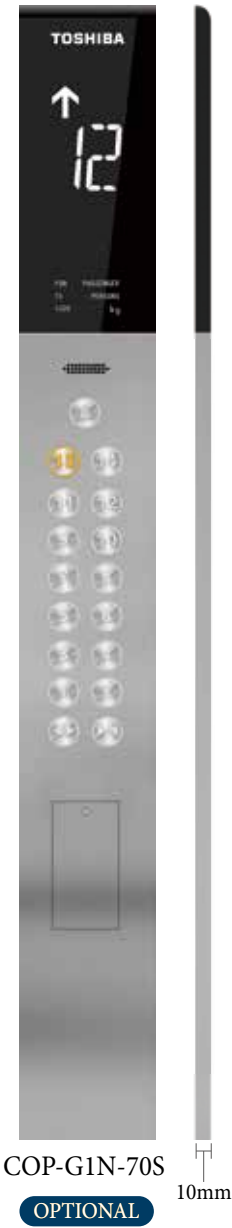
Car Operation Panel: COP type

※Note: Applicable to all models

Car Operation Panel



Car Operation Panel



The actual product colors may vary slightly from those printed colors in this catalog.

The actual product colors may vary slightly from those printed colors in this catalog.

Operation Systems

Hall Indicator Button: HIB type

Hall Indicator Button



HIB-G1L-43B
(4.3 inch LCD)
OPTIONAL



LCD Hall Indicator

Toshiba's universal designed 4.3 inch LCD hall indicators are capable of displaying various announcements such as emergency operation, maintenance status, etc.

4.3inch LCD display



4.3inch LCD segment



HIB-G1K3
OPTIONAL



HIB-G2K3
OPTIONAL

LED Dot Matrix

※Note: A white color or orange color can also be selected for the LED light.

Orange light



White light

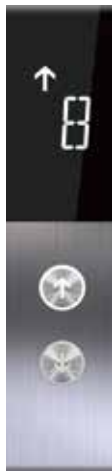


Detail of display



Hall Indicator Button

4.3 inch LCD segment



HIB-G1N-43S
OPTIONAL



HIB-G2N-43S
OPTIONAL

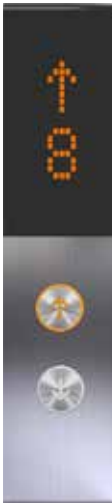


HIB-G1NL
STANDARD



HIB-G2NL
STANDARD

LED Dot Matrix



HIB-G1N
OPTIONAL



HIB-G2N
OPTIONAL



HIB-G1NL-L
OPTIONAL



HIB-G2NL-L
OPTIONAL

The actual product colors may vary slightly from those printed colors in this catalog.

The actual product colors may vary slightly from those printed colors in this catalog.

Operation Systems

Hall Indicator

Hall Indicator **OPTIONAL**



HI-G1-O



HI-G34-O



LED Dot matrix

LCD Hall Indicator **OPTIONAL**

5.7 inch large LCD hall indicator is capable of displaying visuals linked from car security camera.



HI-G1L-57B

With monitoring



Controlled status



Hall Lantern

Hall Lantern **OPTIONAL**

*Note: A white light or orange light can also be selected for the lantern light.



HL-G1-O
(Orange light)



HL-G2-W
(White light)



HL-G3-O
(Orange light)



HL-G4-O
(Orange light)

Hall Button **OPTIONAL**



HB-G1
with parking SW



15mm



G1K series



3mm

Operation Systems

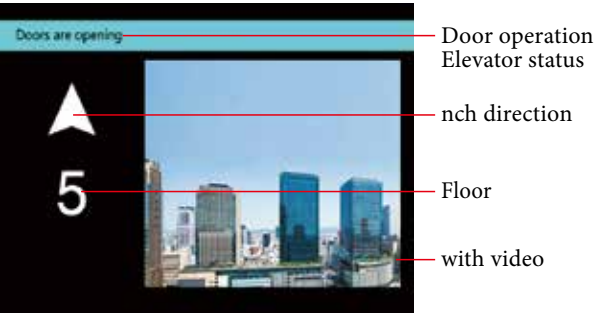
Car Position Indicator

Large LCD Indicator for Car Operation Panel OPTIONAL

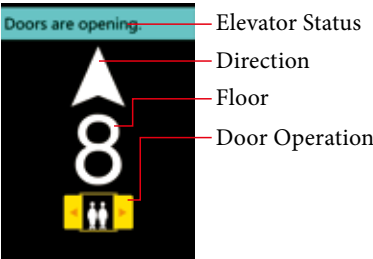
These 10.4 inch and 8.4 inch LCD indicators are capable of displaying in the elevator's various conditions (emergency operations, maintenance status) in large icons and letter in highly visible colors.

10.4 inch display for car operation panel

General car display (Without monitoring)



8.4 inch display for car operation panel



General car display (With monitoring)



Display under controlled status



5.7 inch display for car operation panel

General car display



With monitoring



With video



Controlled status



7.0 inch LCD segment



LED Dot matrix



The actual product colors may vary slightly from those printed colors in this catalog.

The actual product colors may vary slightly from those printed colors in this catalog.

Operation Systems

Button Variation

Product type	Series	Model	Applicable Buttons	Application
POP	G1NL	POP-G1NL	GS-5~7, UB-3	Standard
	G1NS	POP-G1NS	GS-3L, GS-5~6	Optional
	G1L	POP-G1L-104C	KB-1~4, 7~8 UB-1~3 NB-1~2 GS-5~7	
		POP-G1L-84C		
		POP-G1L-57B		
		POP-G1L-70S		
	G1L	POP-G1L		
FCOP	G1NL	FCOP-G1NL	GS-5~7, UB-3	Standard
	G1NS	FPOP-G1NS	GS-3L, GS-5~6	Optional
	G1L	FPOP-G1L-104C	KB-1~4, 7~8 UB-1~3 NB-1~2 GS-5~7	
		FPOP-G1L-84C		
		FPOP-G1L-57B		
		FPOP-G1L-70S		
	G1L	FPOP-G1L		
COP	G1K	COP-G1K	KB-1~4, 7~8 UB-1~2	Optional
	G1N	COP-G1N	NB-1~2	
		COP-G1N-70S		
	G1L	COP-G1L-57B	KB-1~4, 7~8	
HCOP	G1D	HCOP-G1D	UB-1~2	Optional
		HCOP-G1D-N		
	G1K	HCOP-G1K-N	KB-1~4, 7~8	
	G1N	HCOP-G1N-N	NB-1~2	
	G1NS	HCOP-G1NS-N	GS-3L, GS-5~6	
HIB	G1NL	HIB-G1NL/G2NL	GS-5~7, UB-3	Standard
		HIB-G1NL-L/G2NL-L		
	G1N	HIB-G1N/G2N	NB-1~2	
		HIB-G1N-43S/G2N-43S		
	G1K	HIB-G1K3/G2K3	KB-1~4, 7~8 UB-1~2	
G1L	HIB-G1L-43B	KB-1~4, 7~8		
HI	G1	HI-G1		Optional
	G1L	HI-G1L-57B		
	G34	HI-G34		
HL	G1	HL-G1		
	G2	HL-G2		
	G3	HL-G3		
	G4	HL-G4		
HB	G1	HB-G1	NB-1~2, GS-3L	
	G1K	HB-G1K	KB-1~4, 7~8	

Lighting off	Light on	
	A : Orange	B : White
KB-1	KB-1A	KB-1B
KB-2	KB-2A	KB-2B
KB-3	KB-3A	KB-3B
KB-4	KB-4A	KB-4B
KB-7	KB-7A	KB-7B
KB-8	KB-8A	KB-8B

Note : Supplemental explanation about type notation of the GS series Buttons
For example : GS-5A-BT
5A : Orange color right, 5B : White color light
B : Character color "Black" and not lighting (lighting only outline)
BT : Character color "Black" and lighting on (Orange / White color)
W : Character color "White" and not lighting (lighting only outline)
WT : Character color "White" and lighting on (Orange / White color)

Light off	Light on	
	Orange	White
GS-3L	GS-3LA	GS-3LB
GS-5-B	GS-5A-B	GS-5B-B
GS-5-BT	GS-5A-BT	GS-5B-BT
GS-5-W	GS-5A-W	GS-5B-W
GS-5-WT	GS-5A-WT	GS-5B-WT
GS-6-B	GS-6A-B	GS-6B-B
GS-6-BT	GS-6A-BT	GS-6B-BT
GS-6-W	GS-6A-W	GS-6B-W
GS-6-WT	GS-6A-WT	GS-6B-WT

Light off	Light on	
	A : Orange	B : White
GS-7-B	GS-7A-B	GS-7B-B
GS-7-BT	GS-7A-BT	GS-7B-BT
GS-7-W	GS-7A-W	GS-7B-W
GS-7-WT	GS-7A-WT	GS-7B-WT
NB-1	NB-1A	NB-1B
NB-2	NB-2A	NB-2B
UB-1	UB-1A	UB-1B
UB-2	UB-2A	UB-2B
UB-3	UB-3A	UB-3B

The actual product colors may vary slightly from those printed colors in this catalog.

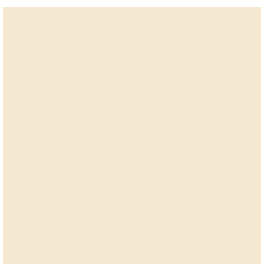
The actual product colors may vary slightly from those printed colors in this catalog.

Color & Material Variations

Color Variation

Textured painted finish for steel panel

STANDARD

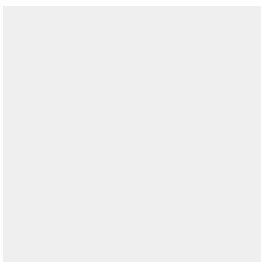


62YS
Light cream

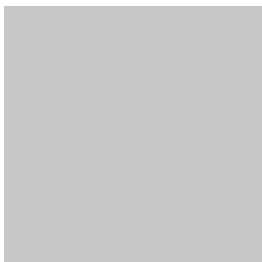


66YS
Mejam Gray

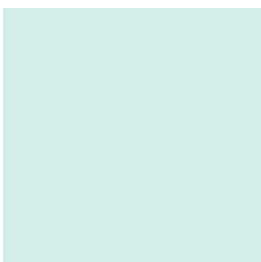
OPTIONAL



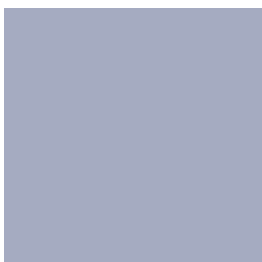
1NS
White



3NS
Silver gray



77GS
Light ocean green



114PBS
Rose blue

※Note: The publication of this page is an example of design. Please contact us for other designs.

The actual product colors may vary slightly from those printed colors in this catalog.

Stainless steel

OPTIONAL



Hairline



Vibration (Non direction)



Sand blast



Satin (No.4)



Hairline (Black)



Hairline (Rose gold)



Hairline (Bronze)



Hairline (Gold)



Mirror (Black)



Mirror (Rose gold)



Mirror (Bronze)



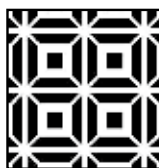
Mirror (Gold)

Sample of etching patterns for stainless steel

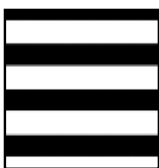
OPTIONAL



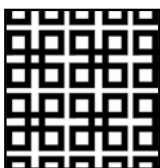
DZ-001



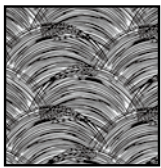
DZ-007



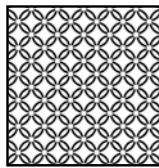
DZ-024



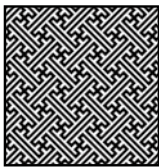
DZ-031



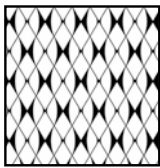
DZ-017



DZ-018



DZ-020



DZ-004

※Note: The publication of this page is an example of design. Please contact us for other designs.

The actual product colors may vary slightly from those printed colors in this catalog.

Color & Material Variations

Color Variation

Vinyl tile for car floor STANDARD

※ 2mm thick (PVC)



Checker plate for car floor OPTIONAL

※ 3mm thick (SUS304)

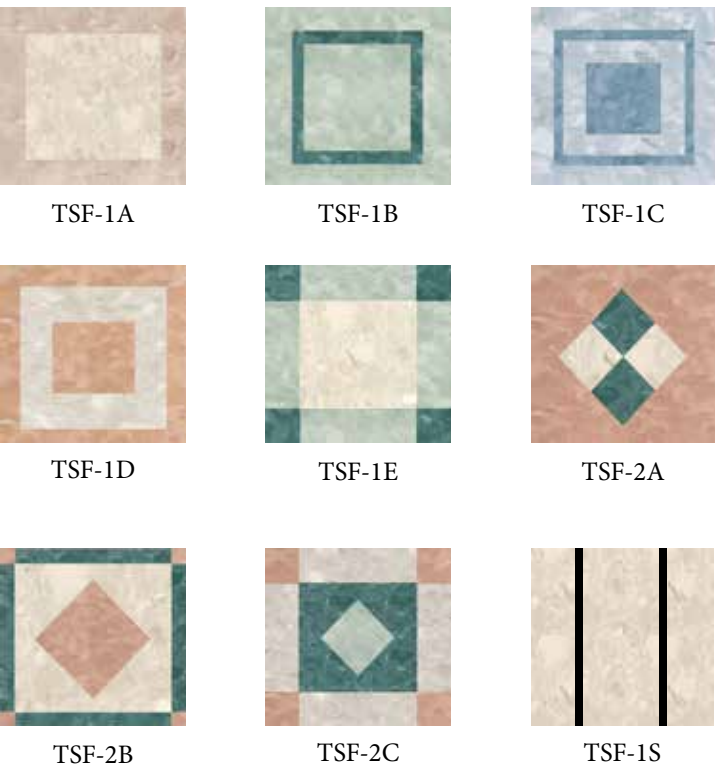


※Note: The publication of this page is an example of design. Please contact us for other designs.

The actual product colors may vary slightly from those printed colors in this catalog.

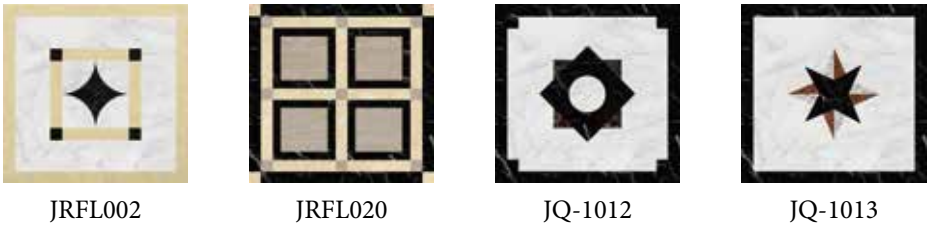
Sample design of tessellated for car floor OPTIONAL

※ 2mm thick (PVC)



Marble of car floor OPTIONAL

※ 10mm thick (Marble)

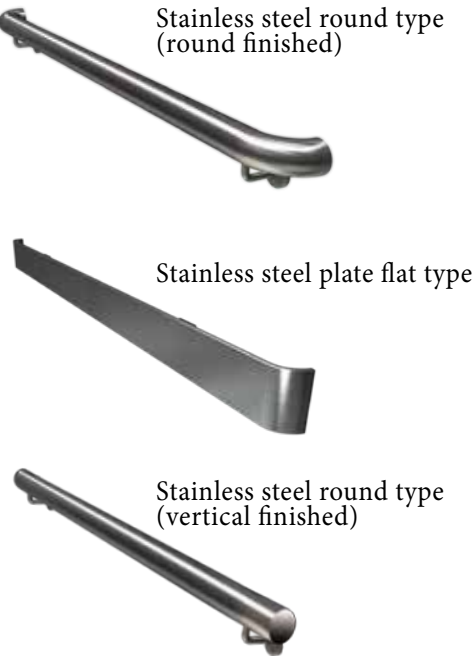


※Note: The publication of this page is an example of design. Please contact us for other designs.

The actual product colors may vary slightly from those printed colors in this catalog.

Other Optional Items

Hand rail OPTIONAL



DLX-24

Mirror OPTIONAL

Mirror made of glass



The actual product colors may vary slightly from those printed colors in this catalog.

HCOP OPTIONAL

Additional installation car operation panel at a low position in the center of the car side panel.



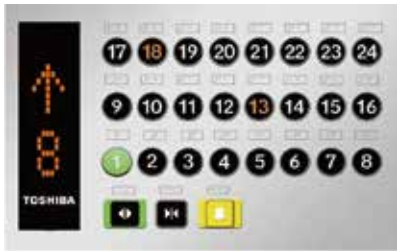
HCOP-G1D-N



HCOP-G1NS-N



HCOP-G1K-N



HCOP-G1D



DLX-28

The actual product colors may vary slightly from those printed colors in this catalog.

Other Optional Items

Elevator for medical facilities OPTIONAL

Car size suitable for transporting stretchers

Recommended specifications

Type	Nos. of Person	Capacity(kg)	Cage size Internal (WxD) (mm)	Door with W (mm)	Door height h (mm)
P17-2S	D	17	1275	1200×2300	1100
P21-2S	D	21	1600	1400×2400	1200

Note: The above scope complies with GB7588:2003 standard

Car side panel	Hairline finish stainless steel
Car door	Hairline finish stainless steel
Car floor	Marble tile (MID-809)
COP	COP-G1L-57B
Indicator	5.7inch LCD
Handrail	Stainless steel round type hand rail



The actual product colors may vary slightly from those printed colors in this catalog.

Simplified observation elevator OPTIONAL

Car interior specifications

Front side view



Rear side view



Exterior specifications

Without lighting



With lighting



The actual product colors may vary slightly from those printed colors in this catalog.

Other Optional Items

Parking switch OPTIONAL

Parking switch is separated from HIB, better design flexibility for faceplate



Hall Emergency Operating Panel STANDARD

Emergency operating device installed at the entrance on the top floor

※Note : Applies to Machine-Room-Less elevator type only.



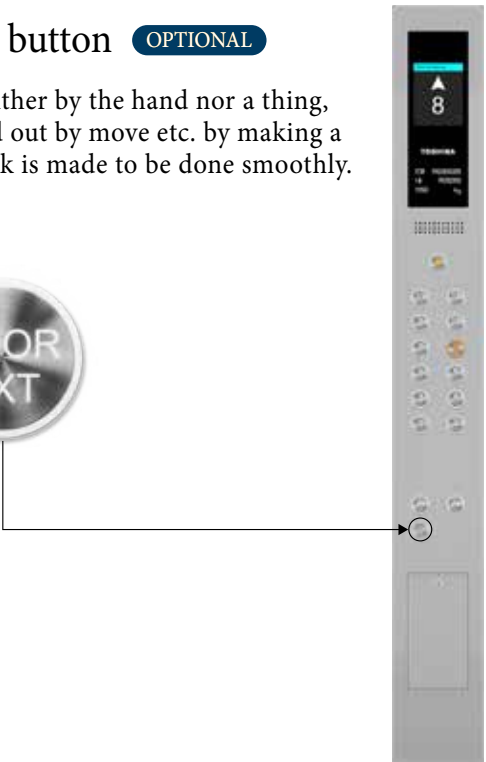
Fireman switch OPTIONAL

Applied to Fireman switch for “Fireman’s operation” in case of provided safety functions



Door open extension button OPTIONAL

Even if it holds a door neither by the hand nor a thing, when taking a load in and out by move etc. by making a door open state hold, work is made to be done smoothly.



The actual product colors may vary slightly from those printed colors in this catalog.

The actual product colors may vary slightly from those printed colors in this catalog.