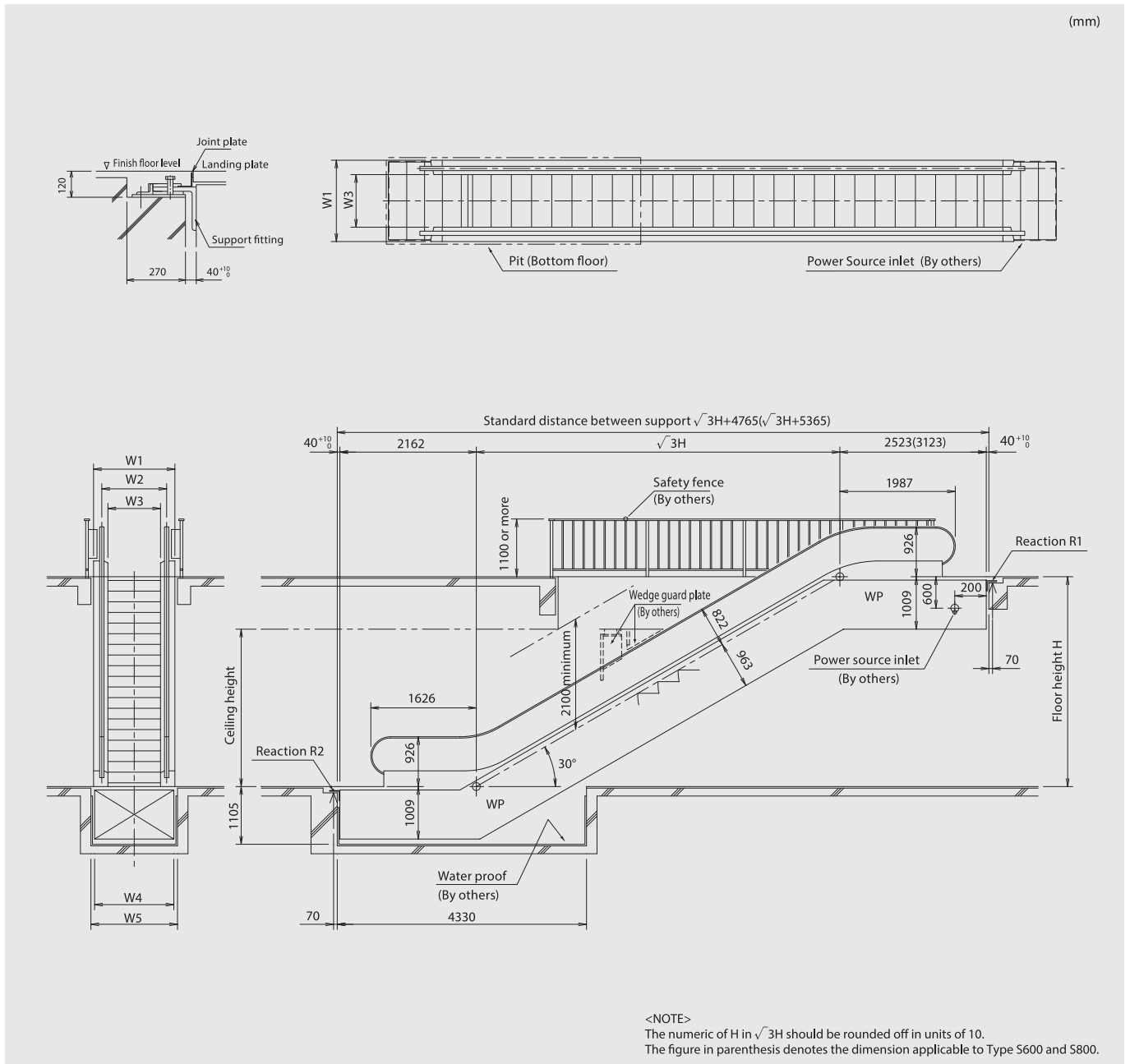


LAYOUT PLAN

(GB16899-2011)

TOSHIBA ESCALATOR
Kindmover-II
 <TE-S1 Series Escalator>

Layout plan 30 deg.



Dimensions(mm)

Type	S600	S800	S1000
W1	1130	1330	1530
W2	837	1037	1237
W3	607	807	1007
W4	1100	1300	1500
W5	1250	1450	1650

Reaction(N)

Type	S600	S800	S1000
Floor height (mm)	$H \leq 6000$	$H \leq 6000$	$H \leq 6000$
R1	$6.96H+30500$	$8.15H+33500$	$9.35H+36500$
R2	$6.96H+26500$	$8.15H+29500$	$9.35H+32500$

LAYOUT PLAN

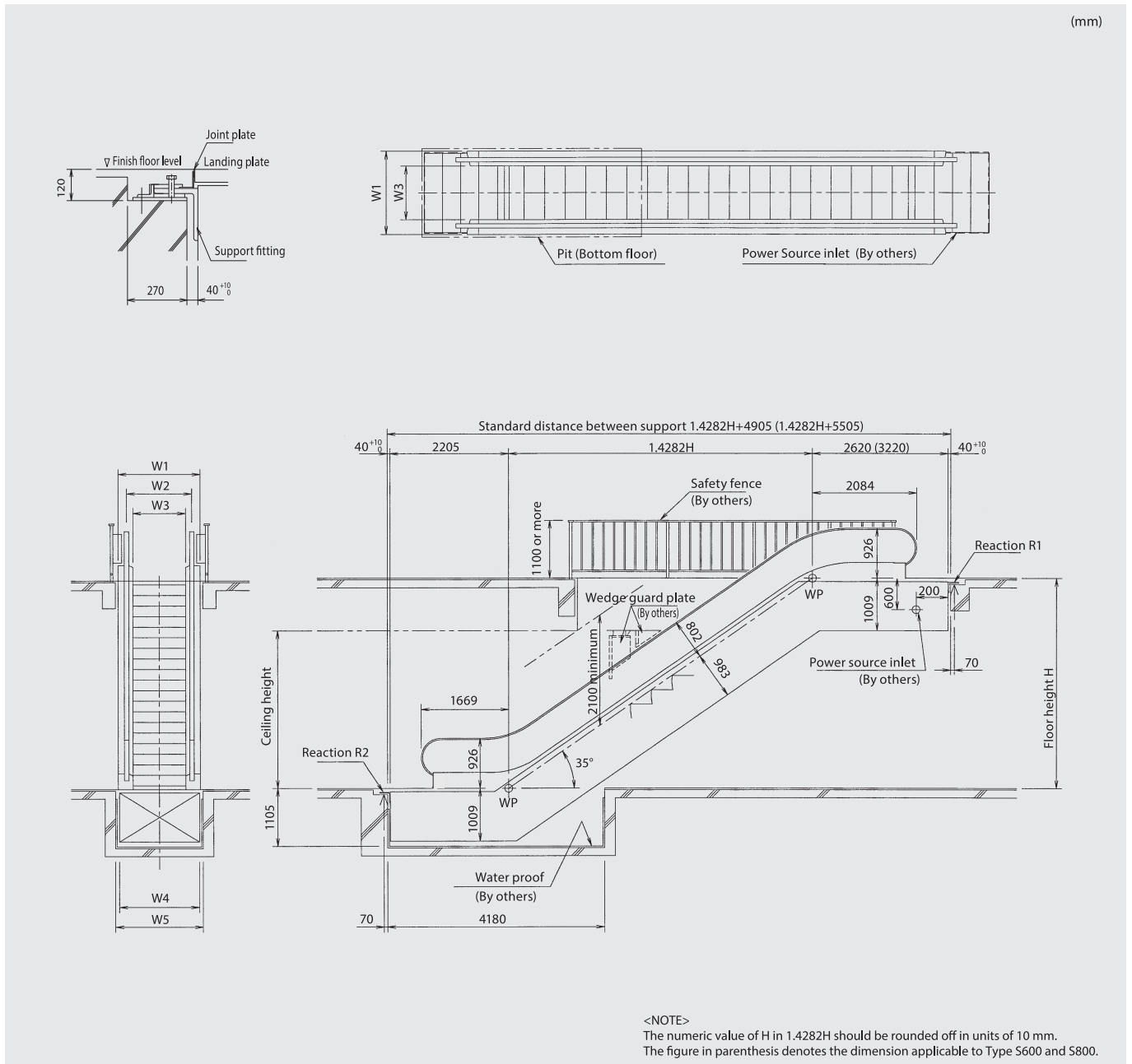
(GB16899-2011)

TOSHIBA ESCALATOR

Kindmover-II

<TE-S1 Series Escalator>

Layout plan 35 deg.



Dimensions(mm)

Type	S600	S800	S1000
W1	1130	1330	1530
W2	837	1037	1237
W3	607	807	1007
W4	1100	1300	1500
W5	1250	1450	1650

Reaction(N)

Type	S600	S800	S1000
Floor height (mm)	$H \leq 6000$	$H \leq 6000$	$H \leq 6000$
R1	$5.85H + 30000$	$6.85H + 33000$	$7.85H + 36000$
R2	$5.85H + 27000$	$6.85H + 30000$	$7.85H + 33000$